

THE VENEER SHOP



Project Regular-use Series is fully

upgraded from texture, color and pattern. The exquisite patterns and textures are original and rough, profound and thoughtprovoking. It has the advantages of large size, light weight, flexible and bendable, convenient installing and low cost, and can be used interior and exterior.

Safe and environmentally friendly

水泥浇筑板 Concrete Board

常备规格/Regular size: 600*3000mm、1200*3000mm

厚度/Thickness: 4mm

不限于以下颜色

Not limited to the following colors



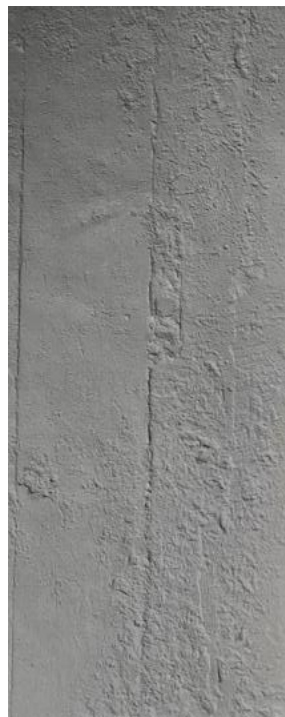
白色/White 100



水泥灰色/Grey 725

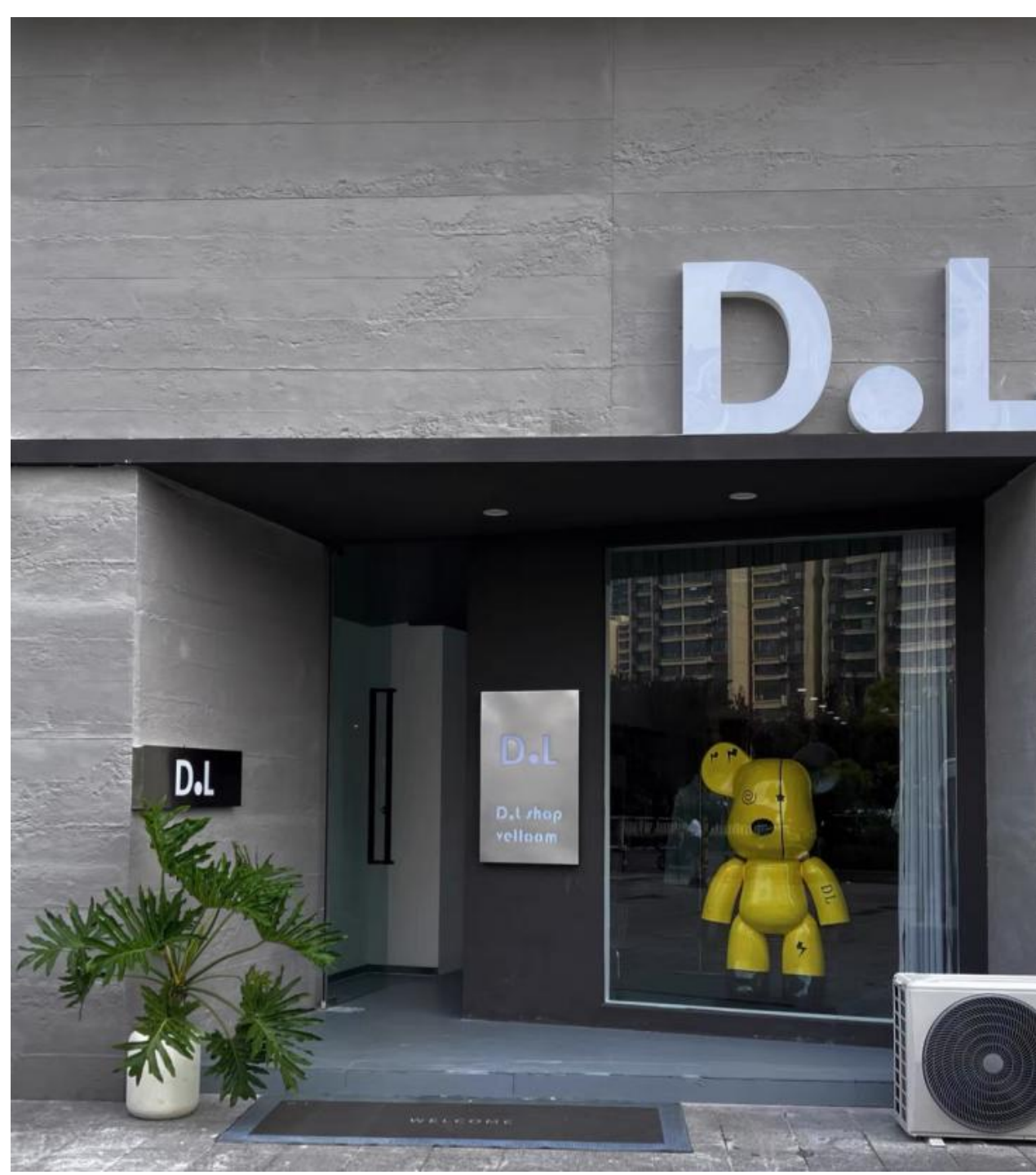


中灰色/Medium Grey 130



灰色/Grey 107





锯台木纹 Sawing wood

常备规格/Regular size: 600*3000mm、1200*3000mm

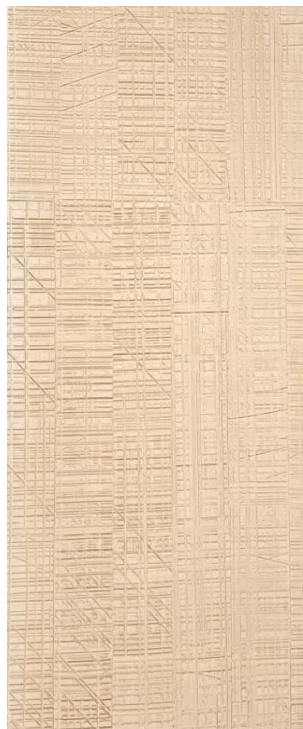
厚度/Thickness: 3-7mm

不限于以下颜色

Not limited to the following colors



白色/White 100



桦木色/Birch color 086

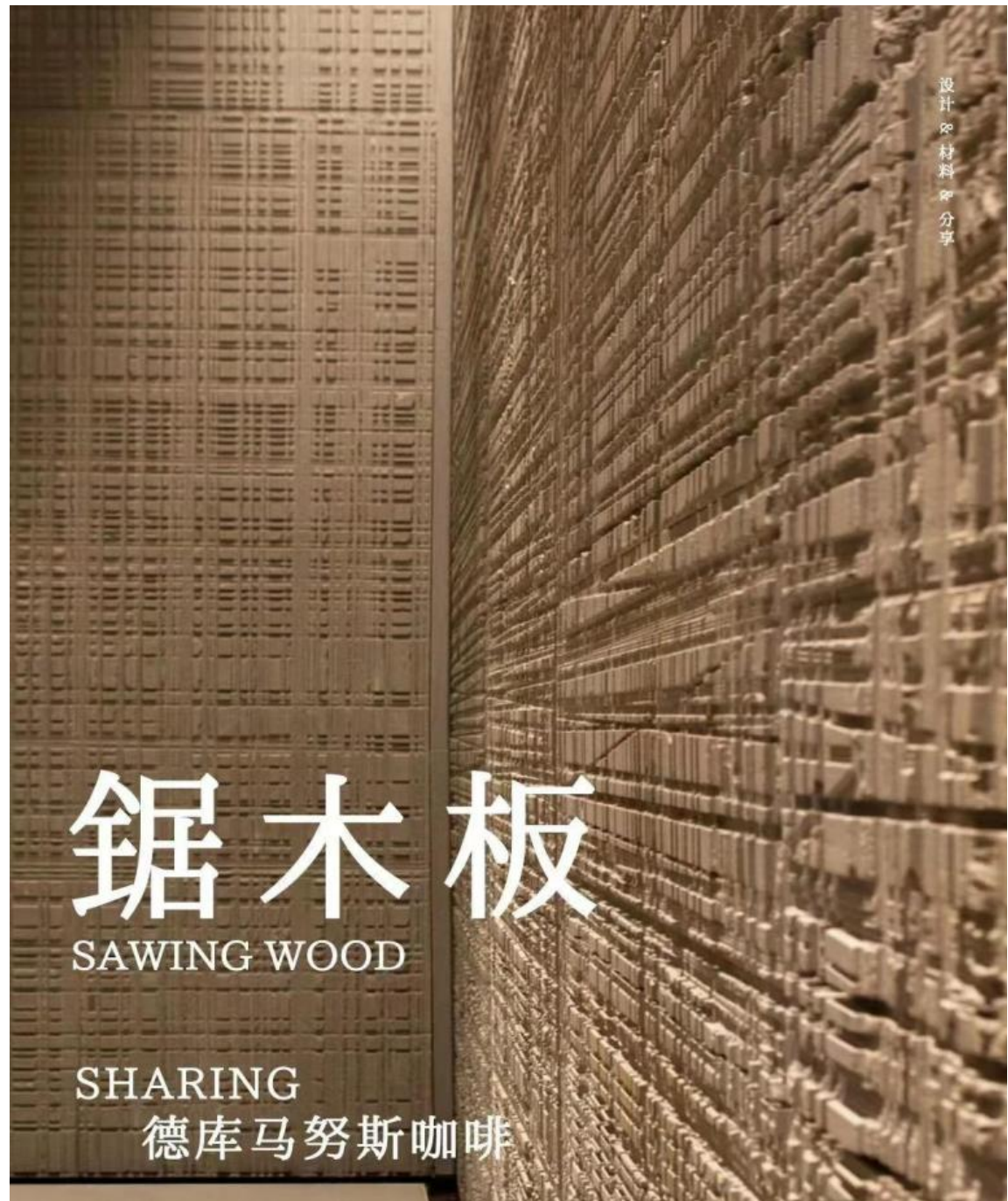


深棕色/Dark brown 062



深灰色/Dark Grey 043





锯木板

SAWING WOOD

SHARING

德库马努斯咖啡

设计材料分享

星月石 Starmoon Stone

常备规格/Regular size: 300*600mm、600*1200mm、1200*2400mm
厚度/Thickness: 3-10mm

不限于以下颜色

Not limited to the following colors



白色/White 100



深灰色/Dark Grey 043



深土黄色/
Deep Khaki 058



黄色/Yellow 240





脉络石 Round Line Stone

常备规格/Regular size: 600*1200mm、600*2700mm、1200*2700mm

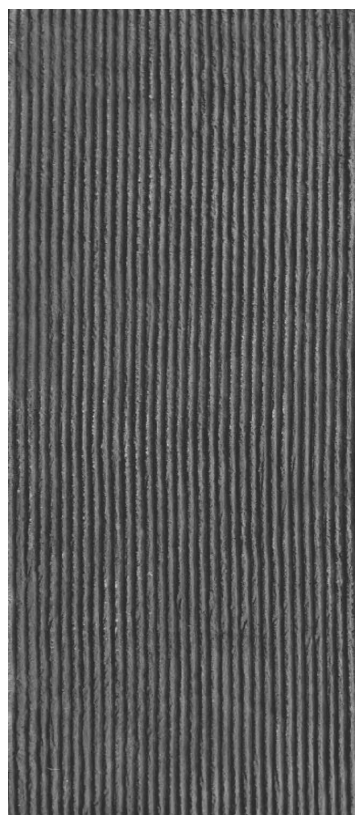
厚度/Thickness: 4-9mm

不限于以下颜色

Not limited to the following colors



白色/White 100



深灰色/Dark Grey 043



米黄色/Begie 215





阡陌石 Square Line Stone

常备规格/Regular size: 600*1200mm
1200*2400mm、1200*2700mm 厚度/Thickness:
3-10mm



白色/White 100



水泥灰色/Grey 725



深灰色/Dark grey 043





粗纹线石 Line Stone Board

常备规格/Regular size: 300*600mm、600*1200mm、1200*2400mm
厚度/Thickness: 3-10mm

不限于以下颜色
Not limited to the following colors



白色/White 100

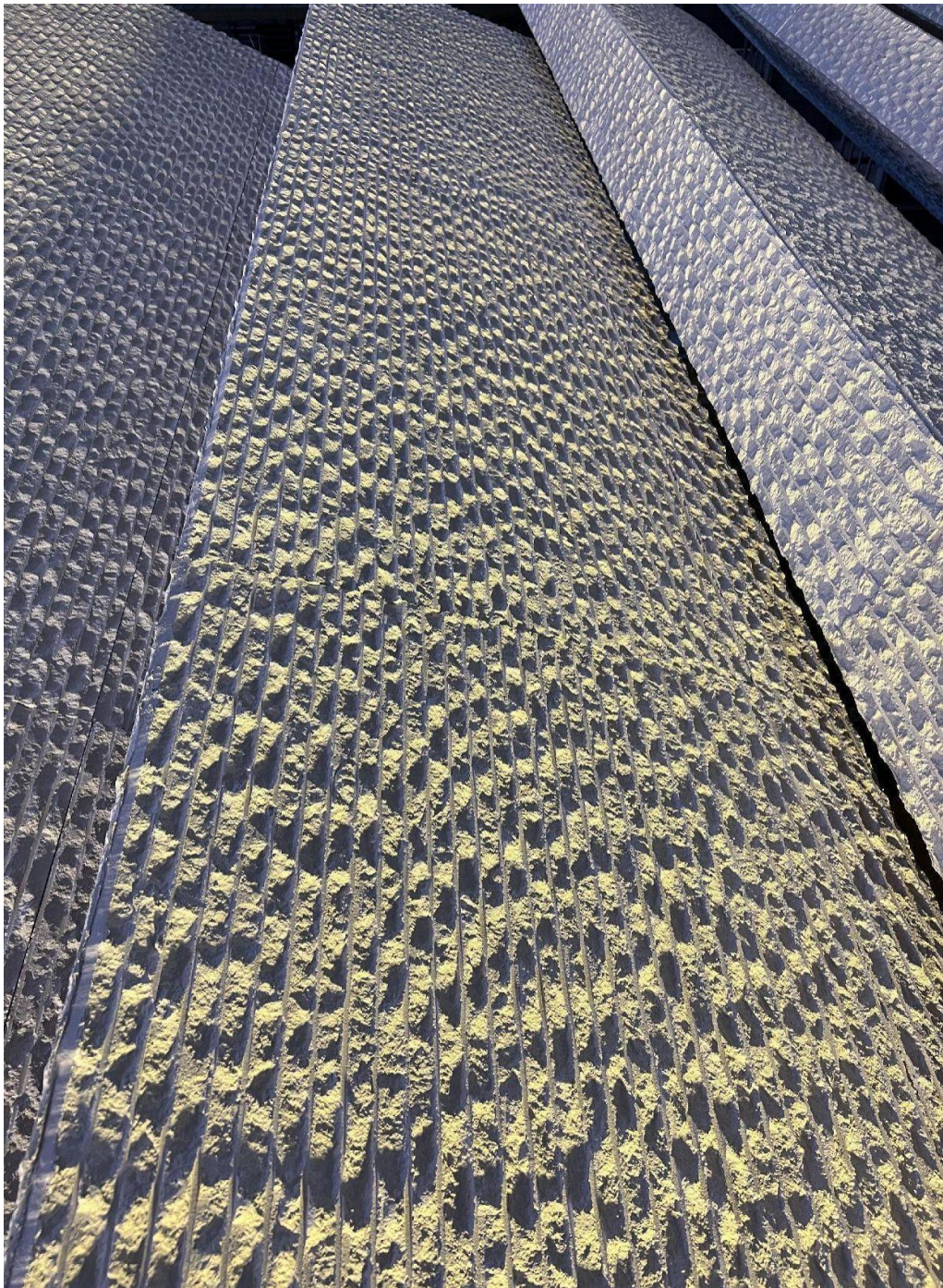


深灰色/Dark Grey 043



黄色/Yellow 240

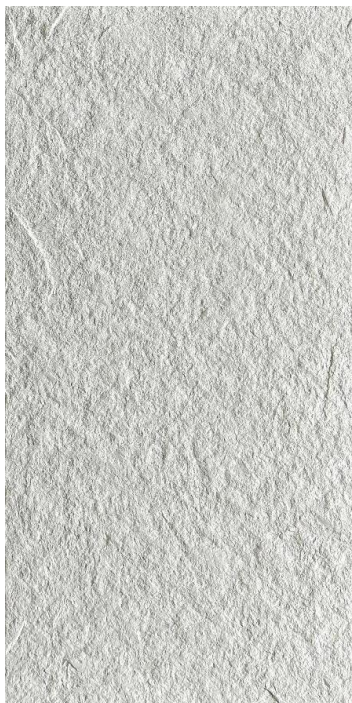




毛面花岗岩 Rough Granite

常备规格/Regular size: 300*600mm、600*1200mm、1200*2400mm
厚度/Thickness: 2.5-5mm

不限于以下颜色
Not limited to the following colors



浅灰色 Light gray 052



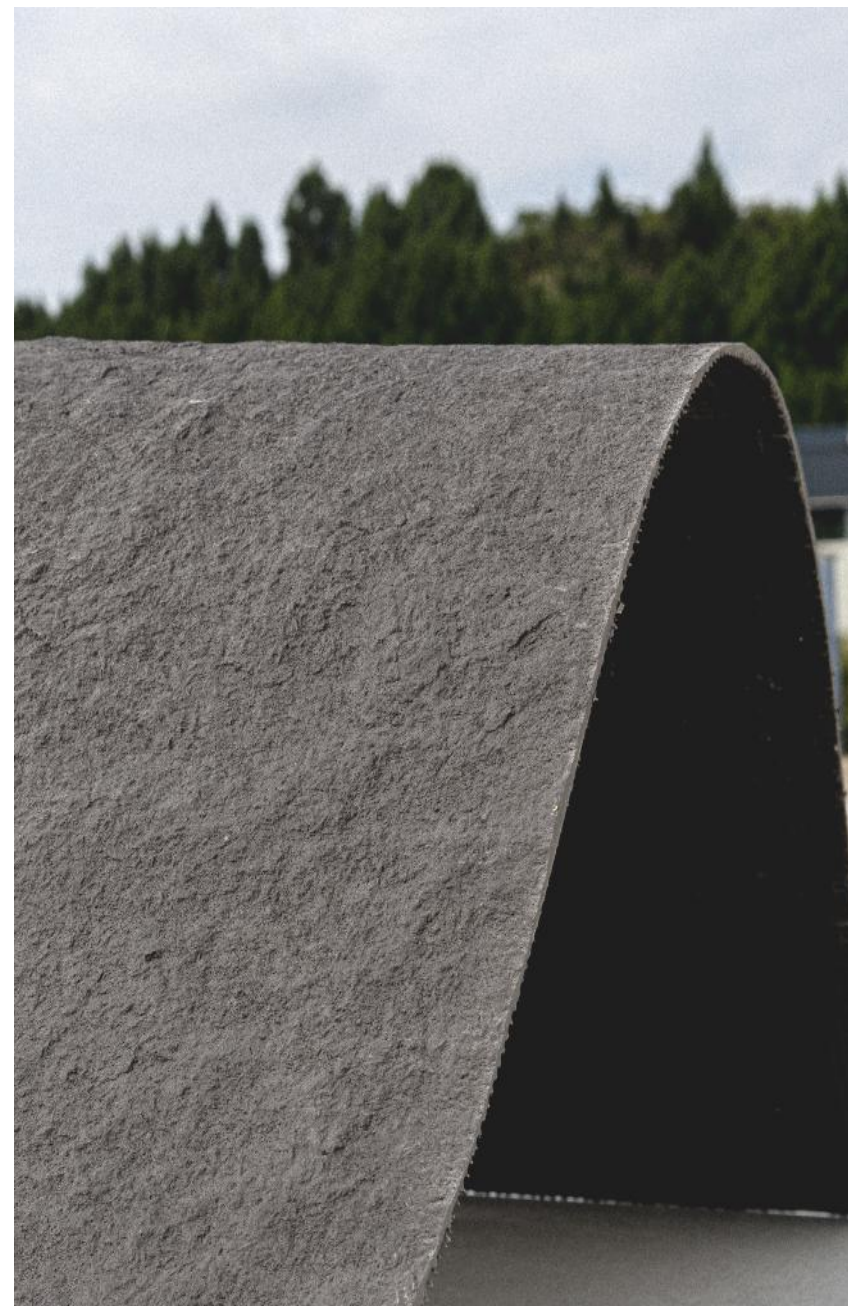
白色/White 100



深灰色/Dark Grey 043



土黄色/khaki 1360





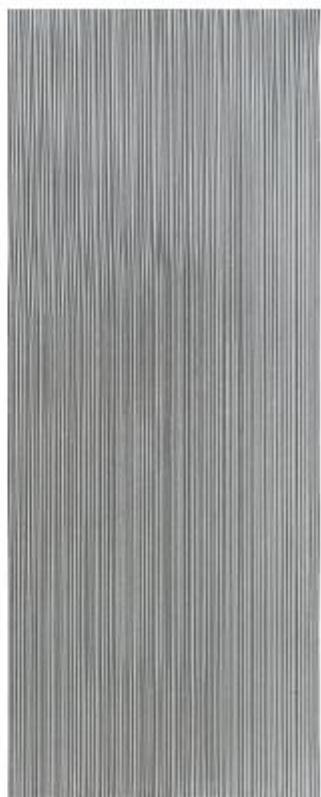
新线石 Fine Line Stone Board

常备规格/Regular size: 300*600mm、600*1200mm、1200*2400mm
厚度/Thickness: 3mm

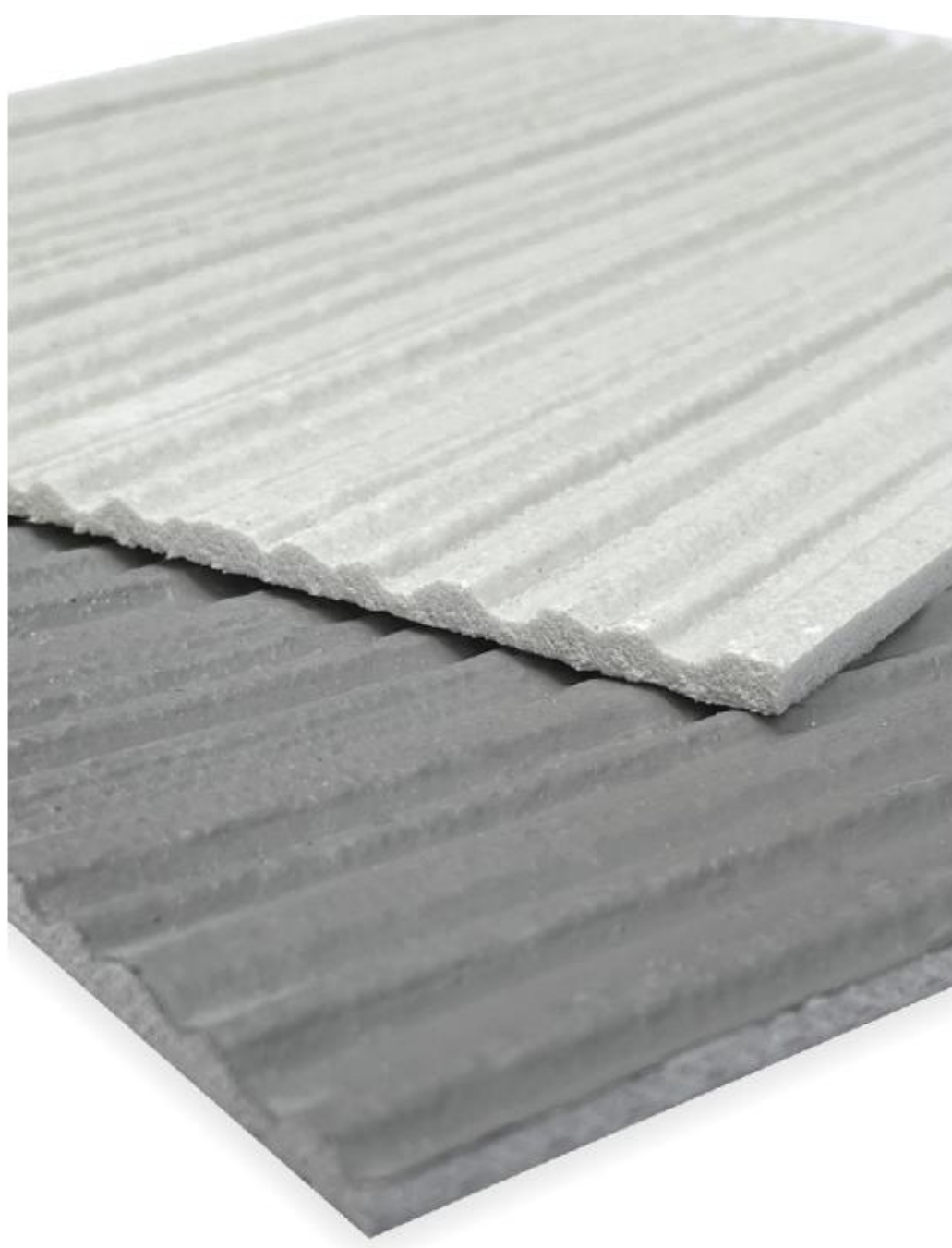
不限于以下颜色
Not limited to the following colors

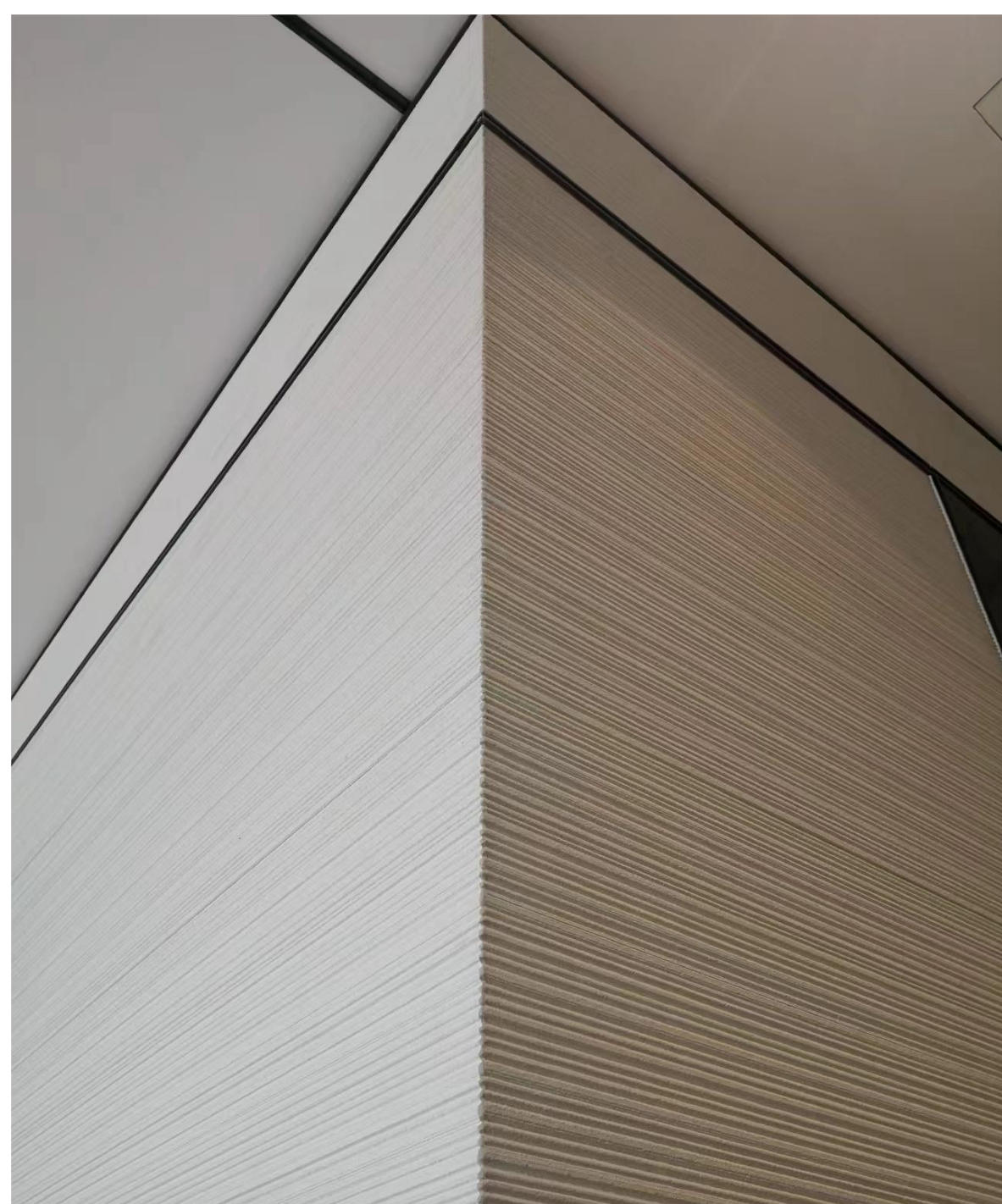


白色/White 100



水泥灰色/Grey 725





英安岩 Dacite

常备规格/Regular size: 300*600mm、600*1200mm、1200*2400mm
厚度/Thickness: 3-4mm

不限于以下颜色
Not limited to the following colors



白色/White 100



深灰色/Dark Grey 043



米黄色/Beige 215





麻编 Weaving

常备规格/Regular size: 300*600mm、600*1200mm、1200*2400mm
厚度/Thickness: 3-5mm

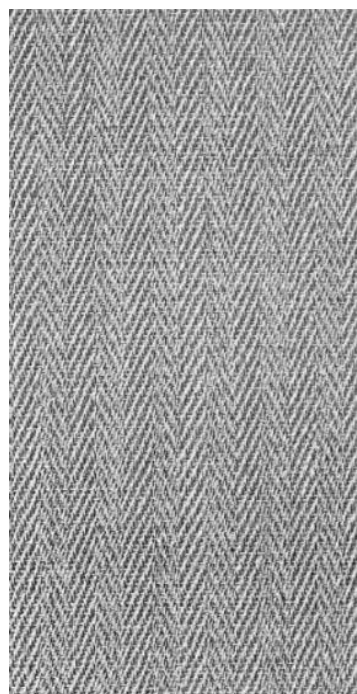
不限于以下颜色
Not limited to the following colors



白色/White 100



黄色/Yellow 240



灰色/Grey 107





水波纹板 Ripple Board

常备规格/Regular size: 600*1200mm、1200*2400mm

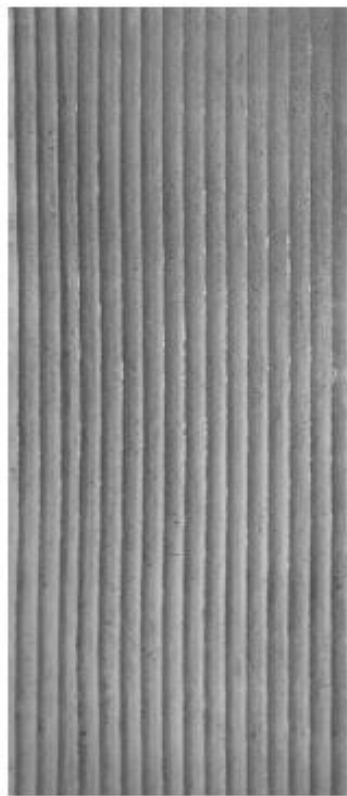
厚度/Thickness: 2-8mm

不限于以下颜色

Not limited to the following colors



白色/White 100



灰色/Grey 107



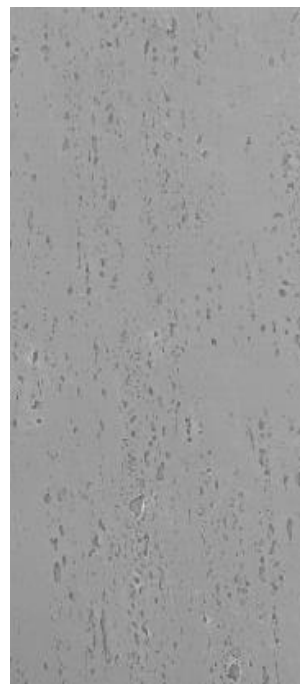
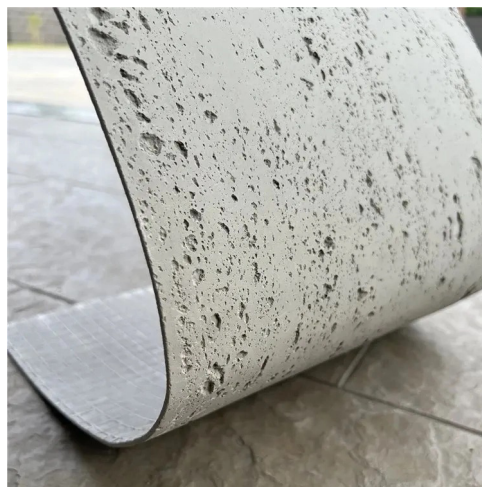


洞石 Travertine

常备规格/Regular size: 300*600mm

600*1200mm、1200*2400mm 厚度/Thickness

3-4mm 不限于以下颜色 Not limited to the



白色/White 100

浅灰色/Light gray 052

米黄色/Begie 215

蓝灰色/Blue Grey 1272

鎏金色/

White Golden 1112

渐变白色/

Gradient white 871

黄灰色/

yellowish gray 221

罗马黄色/

Roman khaki 1465



丹夯土板 Rammed Earth Board

常备规格/Regular size:600*1200mm、600*2400mm、1200*2400mm
厚度/Thickness: 3-4mm

不限于以下颜色
Not limited to the following colors



黄色/Yellow 240



白色/White 100



浅中灰/Light medium
gray 0622



橙黄/Orange 823



丹霞红/
Danxia Red 1093



深灰色/Dark Grey 043





斧凿石 Rockcut Stone

常备规格/Regular size: 600*900mm、600*1200mm、1200*2400mm
厚度/Thickness: 2-8mm

不限于以下颜色
Not limited to the following colors



白色/White 100



深灰色/Dark Grey 043





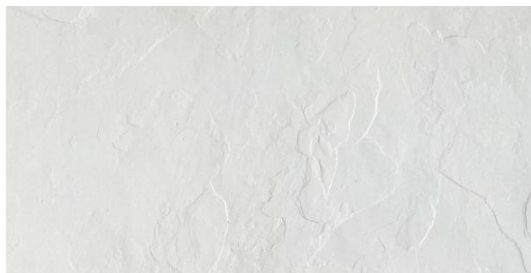
板岩 Slate

常备规格/Regular size:300*600mm、600*1200mm

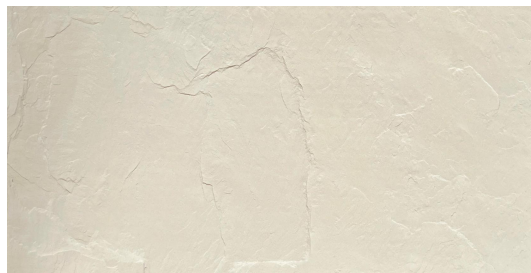
厚度/Thickness: 3-4mm

不限于以下颜色

Not limited to the following colors



白色/White 100



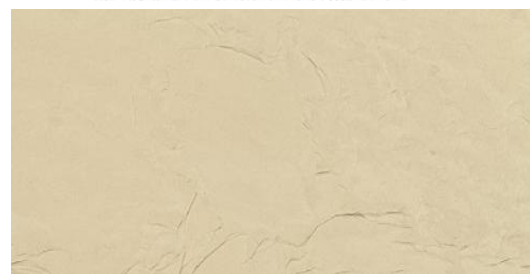
米黄色/Begie 215



浅灰色/Light gray 052



中国红/Red 0224



黄色/Yellow 240



中灰色/Medium Grey 130





Is born with natural color, elegant and rich, and is ideal for urban color planning.



布纹石 Cut Stone

常备规格/Regular size:300*600mm、600*1200mm、1200*2400mm
厚度/Thickness: 3-4mm

不限于以下颜色
Not limited to the following colors



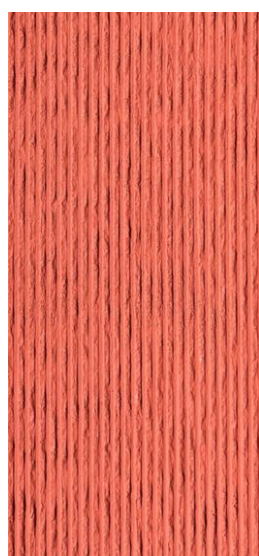
白色/White 100



浅米黄/Light beige 0101



棕灰色/Brown gray 112



橙红色/orange red 1084





*Good flexibility
and light weight*



安哥拉页岩 Angola shale

常备规格/Regular size:300*600mm、600*1200mm
厚度/Thickness: 3-5mm

不限于以下颜色
Not limited to the following colors



白色/White 100



红色/Red 1685



黑色/Black 325



Safe and environmentally friendly

源于自然 臻于艺术

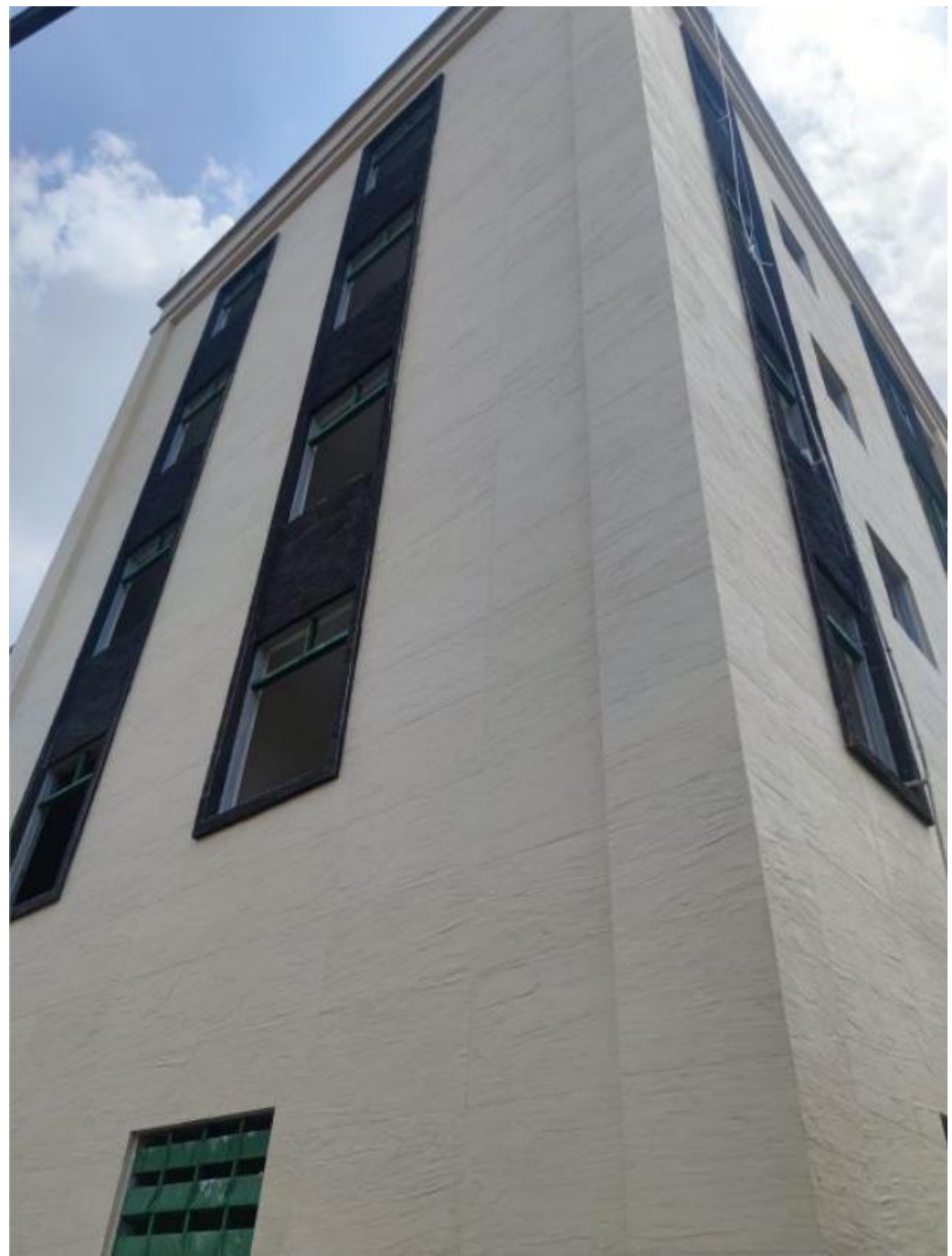
www.hongyuan.com

Master of Green
Architecture Fashion Art



Flexible stones have the flexibility of organic materials and can be shaped arbitrarily

But it also retains the durability of inorganic materials



岁月流水石 Muretto Stone

常备规格/Regular size:300*600mm、600*1200mm
厚度/Thickness: 3-9mm

不限于以下颜色
Not limited to the following colors



白色/White 100



浅灰色/Light gray 1272



深灰色/Dark Grey 425





Good flexibility and light weight

Is born with natural color, elegant and rich, and is ideal for urban color planning.



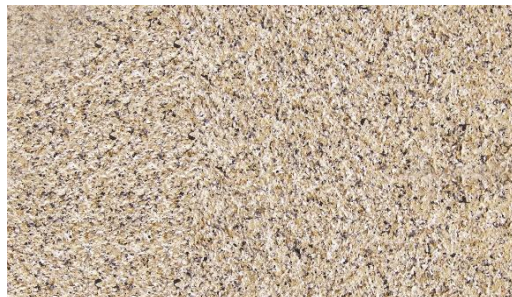
花岗岩 Granite

常备规格/Regular size: 300*600mm、600*600mm、600*1200mm
厚度/Thickness: 2.5-3.5mm

不限于以下颜色
Not limited to the following colors



DC-017



DC-020



DC-14082



DC-017





劈开砖 Facing brick

常备规格/Regular size: 240*60mm

厚度/Thickness: 2.5-3.5mm

不限于以下颜色

Not limited to the following colors



A039



A040



A041



A042

灰色系/Gray Series



A046



A047



A048



A049

红色系/Red Series



A024



A025

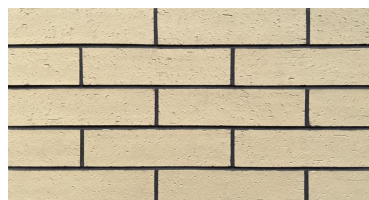
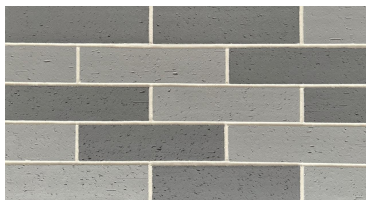


A026



A027

黄色系/Yellow Series



Derived from Artemis, the goddess of the moon in Greek mythology, with a goddess like soft light color scheme that filters out the rough texture of the brick pattern.



仿木纹 Imitation Wood

常备规格/Regular size:300*600mm、600*1200mm
厚度/Thickness: 2.5-3.5mm

不限于以下颜色
Not limited to the following colors



No.0869



No.0862





源于自然 臻于艺术

MASTER OF ARCHITECTURE AND FASHION

Master of Green
Architecture Fashion Art

Is born with natural color, elegant and rich, and is ideal for urban color planning.



Flexible Stone (MCM)

It is an environmentally friendly building decoration material formed by the hybridization of environmentally friendly active clay and environmentally friendly polymer.



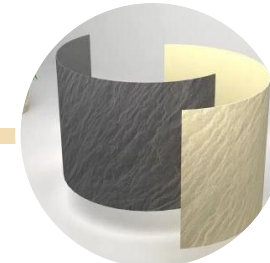
Raw materials: Various inorganic powders such as ecological white soil (stone), red soil (stone), loess (stone), black soil (stone), purple soil (stone), etc., collected from far away cities and subjected to strict technical testing.

Modification: After the raw materials are fully crushed, the inorganic compound surface is coated with organic activity through spray and other methods. The molecular chain of natural soil is extended by more than 30 rational technologies such as nanotechnology and gamma ray to compound and modify it, making it a material with new performance, which has both the durability of inorganic materials and the plasticity of organic materials.

Forming: Based on various natural material textures or historical handicraft elements, modern art creation elements, etc., using cutting-edge photosensitive mold cloning technology to create, under photochemical isomerism and controlled curve temperature, any shape can be formed.

Flexible Stone (MCM) productive process

1PC = 30PCS



Raw material
collection

Mechanical
treatment

Modification

Produce

Performance
tuning

Forming

Collect inorganic compound such as soil and stone powder from nature

Color separation and pulverization of inorganic compound to form microscopic inorganic powder

Surface coating modification of particles using fluorinated surfactants to form environmentally friendly active soil

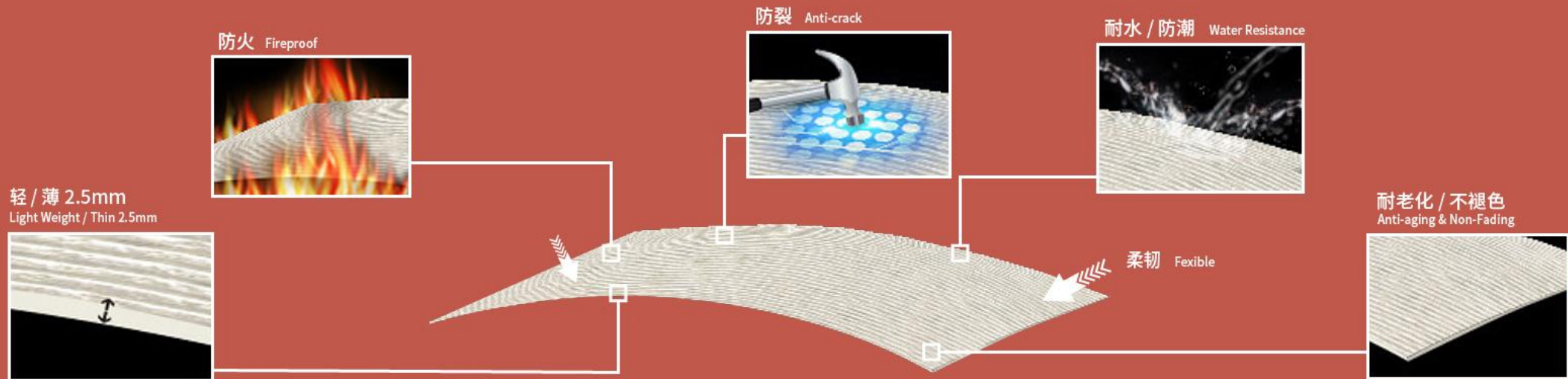
Adopting self-developed fully automated production line modeling

The flexibility and hardness of the finished product are adjusted through curve temperature and modifiers

Forming sheets, rolls, blocks, plates or profiles

Features

- 1. Thin and light:** Each piece has a thickness of only 2-6mm and weighs only 3-8 kilograms/square meter. It is easy to install and has high safety, making it suitable for high-rise buildings.
- 2. Soft, earthquake resistant and crack resistant:** can be directly curved, with good ductility, earthquake resistant and crack resistant. Suitable for irregular buildings.
- 3. Anti fouling and self-cleaning:** special nano glazed surface, self cleaning technology with net load.
- 4. A-level fire protection:** A-level fire resistant material.
- 5. Anti freezing and thawing, acid and alkali resistance, durability, and non fading:** The freeze-thaw test has been conducted 100 times, and the accelerated aging test has been conducted for over 4000h. The surface is free from powdering, cracks, peeling, and discoloration, equivalent to outdoor use for more than 50 years.
- 6. Safety:** Allow the building to breathe freely and not fall.



Product Features Excellent Performance

Performance Comparison	Stone	Ceramic tile	Paint	Aluminum Composite Panel	Terracotta panels	Flexible Stone
Durability	Durable	Durable for 20 years without discoloration	easy to fade	Ordinary	Durable for 20 years without discoloration	Durable, no Chalking or discoloration over 50 years
Environmentally	Not environmentally friendly, deforestation	Not environmentally friendly. The production process emits a large amount of carbon dioxide and waste residue	Not environmentally friendly Pollution emissions during the production process	Not environmentally friendly Pollution emissions during the production process	Not environmentally friendly High temperature sintering is required, and a large amount of exhaust gas needs to be discharged	Very environmentally friendly. There is no discharge of "three wastes" during the production process. National three-star green building materials
Fire performance	-	Fireproof	-	Not fireproof	Fireproof	A-grade fireproof
Safety	Unsafe	There are safety hazards	safety	There are safety hazards	There are safety hazards	Safe, light and soft, earthquake resistant and crack resistant
Convenience	Inconvenient construction	Inconvenient construction	Very convenient and fast	Inconvenient construction	Inconvenient construction	Very convenient and fast
Expressive	Only stone products	Limited expressive	Limited expressive	Limited expressive	Single color and variety	The expressive power is very rich. Imitation of stone, wood, leather, and metal can be achieved.
Cost performance	Expensive, superior stone, market value more than 100 dollars/square	Cheap	Cheap	Expensive	High comprehensive cost	High cost-effectiveness, easy construction, logistics savings, short construction period, and labor saving

Analysis of Similar Products

Category	Technical Principles	Quality	Features
Flexible Stone(MCM)	Inorganic powder modification technology, made by hybridization of environmentally friendly active soil and environmentally friendly polymer	superior	It combines the durability of inorganic materials with the plasticity of organic materials. Beautiful, environmentally friendly, durable (aging resistance test over 3500 hours), A-grade fireproof.
Non active powder flexible stone	Made by mixing fine sand/calcium carbonate and propylene lotion	inferior	Applied to exterior walls, it is prone to cracking and discoloration, and its lifespan is similar to that of ordinary coatings; There is a 10 times difference in service life compared to MCMFlexible Stone.
Flexible Stone coating	Material and process of genuine stone paint	inferior	Easily chalking and discoloring. Generally, artificial aging and weather resistance experiments are less than 2000 hours, which is not environmentally friendly.
Cement Flexible Stone	Synthesized with cement and waterproofing agent	inferior	Applied to exterior walls, it will turn alkaline under the action of rainwater, making the building dull and greatly reducing its aesthetics.